

## Spider-80 and ME'scopeVES Bundle

Crystal Instruments' Spider-80 dynamic measurement system is now supported by Vibrant Technology's ME'scopeVES. The Spider-80 system works as a front-end that integrates with the Direct Data Acquisition functionality of ME'scope.

### Features

- Display acquired time domain and calculated frequency domain waveforms
- Use a spreadsheet for all front-end channel parameters
- Use Scope mode for real-time signal display
- Display measurement locations on a connected structure model
- Accumulate measurements directly into a connected Data Block
- Use triggering with accept/reject controls for impact testing
- Use force and exponential windows

### System Requirements

- Spider-80 hardware system
- ME'scopeVES software version 5.1
- PC with Windows operating system (XP SP3 and above)

### Connection

The Spider system connects to the PC running ME'Scope with a direct Ethernet connection or through a Local Area Network (LAN). The Spider IP Address Setup Tool is used for the IP configuration.

#### Connecting Directly

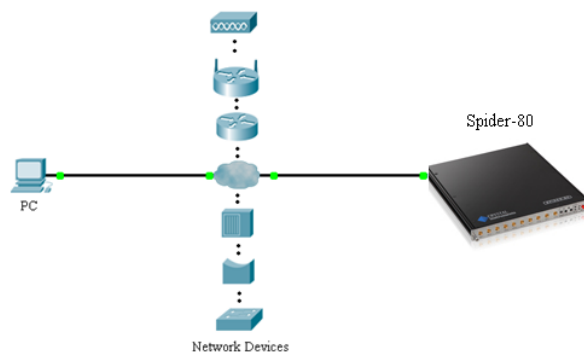
In this connection method, an Ethernet cable directly connects the Spider-80 and the computer together.



The IP settings of the PC and the Spider must be configured so that they are on the same subnet.

#### Connecting through a LAN

In this connection method, both the computer and Spider connect to the same Local Area Network. The Spider cannot be connected across a WAN or the Internet.

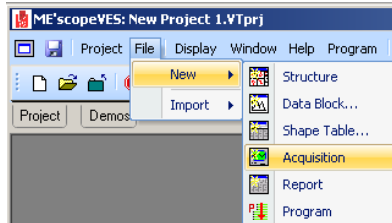


The Spider Supports both static IP and dynamic IP (DHCP) network configurations.

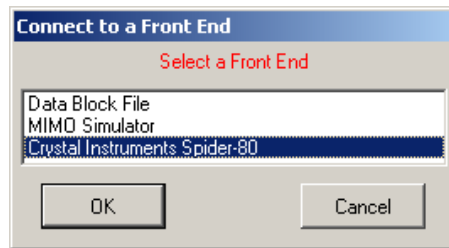
## ME'scopeVES Setup

After configuring the IP settings and connecting the Spider, follow these steps to use the Spider with ME'scope:

1. Copy Spider-80's license key file to the ME'scopeVES root directory (e.g. \\Program Files\MEscopeVES\_v5)
2. Open ME'scopeVES, create or open a project, and then select File -> New -> Acquisition



3. Select Crystal Instruments Spider-80 as the front end.



4. Click OK to connect; the status shows Front End Ready; follow ME'scopeVES manual to continue.

